

Missouri State Beekeepers Association

August 1998

President's Column

This is my last letter as president of the Missouri State Beekeepers. I would like to thank everyone for the learning opportunity. Out of every situation something can be learned and it can be positive. I have learned a lot. I would extend a heartfelt thank you to the people who continued to be my friends and offer their support and help over the past three years.



I hope that you will all rally around the new leadership with the necessary courtesy, respect and support that this volunteer position requires in order to make things go smoothly.

I wish you all well in the future with your state association and everything you do.

Thanks!

Neal

Thanks Neal for your dedication and fine work as President, and to Kelly, who was your support!!



Honey of a Verse

Peas & Honey

"I eat my peas with honey,
I've done it all my life.
It makes my peas taste funny,
But it keeps them on my knife."

Anon.

Special Board Meeting

As this newsletter is going to print, the State Fair is still in progress, and you probably have already heard, the entries were way down and manpower is in short supply. So, while the fair is still fresh in our minds, we will be having a special meeting @ 8:30AM on September 19th at the Runge Conservation Nature Center (from Jeff City take Hwy. 50 west). As we all know running the honey booth has been a problem for several years and we need to discuss the positive and negative aspects, redirect our focus. The purpose is how to improve the fair. In the latest edition of *The Speedy Bee*, Troy Fore speaks of beekeepers being contentious, that we would rather disagree than get along and have independent spirits. Well, I don't think Missouri Beekeepers fit this description. We can come and meet together, discuss our problems and work together, all members are welcome to attend. September is a busy sales time for each of us, but we feel that it is necessary to discuss the fair, and get a head start on next year. If you are unable to attend, your input is still needed. If you did not complete a fair questionnaire in Sedalia, please complete the attached form and return to Ian Brown by



September 10th, this will give him time to tally the information and compile an agenda. If anyone has an overhead projector that we can borrow, please let Ian know ASAP. You can bring your own lunch or we will be taking orders for lunch to be delivered, at everyone's own expense. Coffee and soft drinks will be available.

Parking at the Fair



It was brought to my attention at the fair, that evidently in years past, volunteer workers could stop in at the caboose and get special parking permits. This year no special permits were distributed and there was concern about favoritism, politics playing, and that even dishonesty, occurred about the parking tickets. I fully investigated the special parking and entry permits situation, speaking to the Fair Administration, the caboose personnel and other people with booths, both non-profit and profit. No booth was given any free or special parking or entry permits to the fair this year, except for the Horticulture group. As was mentioned in the fair book, they could pick-up-parking permits at the caboose. This "perk" was negotiated in their contract with the fair. Evidently, in the past the beekeepers were not suppose to be given permits, but some were. Rules were tightened and enforced this year. I hope this clears up any misunderstanding, if anyone did get a permit this year, they were not suppose to.



Ian

Upcoming Elections

At our semi-annual membership business meeting to be held October 10, we will be conducting our annual elections. Attached to this newsletter you will find another questionnaire, requesting nominations and your volunteering to serve the association in some capacity. Please complete these and return to our Secretary by September 30, so that ballots can be prepared and other positions can be filled. We want to spread the

responsibilities around, not over work a few individuals, and so that everyone can have their opinions considered.

Local Treasurers

We are still having difficulties with the local associations turning in money in the correct amount and on a timely basis and part of the problem are members not paying their dues on schedule. All dues are due the 1st of January. On your mailing address of this newsletter is the year in which your membership expires. Starting in 1999, we will be enforcing the rule, that one newsletter will be sent to late paying members, then your membership will be dropped from the register. We hope everyone understands.

Ron

News from the Auxiliary

Schedule for the Auxiliary meeting on October 10th.

1:00PM "Cooking with Honey" - Karen Deaton
2:00PM "Marketing" - Sharon Gibbons
3:00PM Business Meeting

I want to thank everyone who has helped on the quilt. IT IS BEAUTIFUL!! We can be proud to sell tickets for such a fine item. I want to especially mention Jean Fisher, who has done a great job of teaching us inexperienced sewers, organizing the whole process and doing a lot of work on the quilt itself.

I also want to ask each of you to think about and discuss among yourselves what we want from our queen program. We decided at the last beekeeping meeting to continue with the queen program. BUT... we have not had very many requests for our queen to attend functions. What do we want to accomplish with our queen program? And are we each willing to make a commitment to the program? Are we willing to promote our product, and do we want a honey queen to help? Are there functions where our queen would make a difference? What needs to be changed about the program to make it a vital part of our organization? We as a group should not be asking someone else to take part if we are not willing to make a contribution ourselves. Please let me know or come with some suggestions and comments.

We will be having the silent auction and dollar auction again this year, but we need to explore other alter-

natives to raising money for the queen program if this is something we decide to really make a commitment to. Sometimes it is better to fall back a couple of steps and look at the goal, rather than to keep going forward and losing site of the goal all together.

Thank you for your consideration of these issues. I have been very pleased with the amount of hard work everyone has done already. Let's keep up the good work!

Vera

DRAPERS SUPER BEE

We offer fast and courteous service to all beekeepers. We sell all the supplies for beekeeping, plus bees, queens and honey for those who run short. Order is shipped the same day as received in most cases. Free catalog on request.

Business hours: M-F 8-5; Sat. & evenings by appointment.

Phone 402-274-3725. Address: DRAPER SUPER BEE, 914 S Street, Auburn, NE 68305.

Ray's Remarks

None received at press time.

Mike Brown's Comments

Attached you will find the list of apiculture exhibit winners. As you will notice, the number of exhibitors was very low.



INDIVIDUAL COMPETITION

43 Entries

Total premium money awarded: \$395.00

Total returned to fair: \$310.00

Total available in section: \$705.00

Number of entries in each class:

| | |
|---------|--------------------------|
| Class 1 | 0 entries |
| Class 2 | 3 entries - Rose Terrill |
| Class 3 | 4 entries - Rose Terrill |
| Class 4 | 4 entries - Rose Terrill |
| Class 5 | 1 entry - Bob McCarty |
| Class 6 | 3 entries - Rose Terrill |
| Class 7 | 0 entries |

| | |
|----------|-----------------------------|
| Class 8 | 10 entries - Norm Grosche |
| Class 9 | 6 entries - Louise O'Fallon |
| Class 10 | 0 entries |
| Class 11 | 3 entries - Rose Terrill |
| Class 12 | 0 entries |
| Class 13 | 3 entries - Rose Terrill |
| Class 14 | 1 entry - Ted Jansen |
| Class 15 | 3 entries - Casper Blecha |
| Class 16 | 2 entries - Casper Blecha |

GROUP COMPETITION

42 Entries

Total premium money awarded: \$311.00

Total returned to fair: \$ 77.00

Total available in section: \$382.00

| | |
|----------|----------------------------|
| Class 17 | 3 entries - Boone Regional |
| Class 18 | 3 entries - Midwestern |
| Class 19 | 4 entries - Midwestern |
| Class 20 | 2 entries - Midwestern |
| Class 21 | 2 entries - Midwestern |
| Class 22 | 15 entries - Midwestern |
| Class 23 | 8 entries - Midwestern |
| Class 24 | 4 entries - Eastern |

Mike

Don't forget to send in those questionnaires and nomination sheets! If you don't express your opinion, that leaves you with no right to complain!

The Walter T. Kelley Co., Inc.
Serving beekeepers since 1924

P.O. Box 240 Clarkson, KY 42726



Ph (502) 242-2012

Fax (502) 242-4801

1-800-233-2899

"Bees are our business"

Queen's Piping

Hello fellow bee lovers! Summer is coming to a close for me and school will be starting soon, can you believe it? I wanted to give all of you an update about my travels for the Beekeepers Association. In July, I attended the Boone County Beekeepers Association dinner and met over 25 wonderful people involved with bees. I also went to West Plains for the Farmers Market on July 24 and was given the opportunity to answer questions as well as promoting the consumption of honey. Thanks again to Sharon Waddell and Pam and Milton Wright for inviting me to West Plains. I also attended the 1998 Missouri State Fair where I demonstrated cooking with honey. The two items I made for the demonstration, Cranberry-Orange muffins and honey butter received great reviews. These two recipes are also in my recipe brochure. I hope all of you got a chance to stop by during your trip to the fair, if not, call me at 573-814-2139 and I can send you a copy of the recipe brochure. I look forward to seeing everyone at the fall Beekeepers Meeting at the lake!

Sincerely,

Karen

Honey Board Report

Representatives – Sharon Gibbons & Glenn Davis

No report at press time



**WESTERN BEE
SUPPLIES, INC.**

P.O. BOX 190, Polson, MT 59860
CALL TOLL-FREE 1-800-548-8440

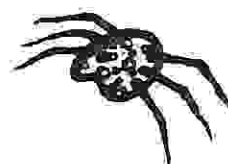
Honey, that Dinosaur is Singing

That lovable purple dinosaur named Barney will be singing the praises of honey in a recently filmed segment which begins airing this September. The National Honey Board provided bee suits, video footage of bees gathering nectar and background information to help the producers write the script. The board also arranged for Barney to have an observation hive. The segment will touch upon the job of a beekeeper, their importance in pollination and growing crops as well as their sweet product. Barney reaches 11 million children and parents each week.

Copied from *Badger Bee*, July 1998.

Fun Fact

Are bugs and insects the same? If not, which is a honey bee? According to Encarta Encyclopedia bugs and insects are not the same. Bugs are the order of *Heteroptera* and insects are *Hymenoptera*. Honey bees are insects (Hymenoptera). Did you know that spiders, scorpions, ticks, centipedes and millipedes are neither a bug nor insect?



Best Hive

Don't forget to send in that picture of your best producing hive.

To Our Health

This health tip was printed in the last newsletter, however I am repeating it, because one of our customer's informed me that she uses this treatment on her 7 year old son, for mosquito bites. He has severe reactions to mosquito bites and this really works. Bee Stings: Pediatrics (88:744) journal recommends ice compresses and meat tenderizer to relieve the pain of bee stings. Applying ice while the person is lying down will reduce the swelling and lessen the pain. Lying

down will help slow the circulation and reduce spreading of the toxic venom. The meat tenderizer seems to work because it contains the enzyme papain. Papain tenderizes meat by breaking down the tough meat fibers, and it breaks down the bee venom the same way.

Below is taken from *A Taste of Honey* by Jane Charlton & Jane Newdick published by Chartwell Books, Edison, New Jersey 1995

Sleep Enticer – the combination of chamomile, a natural sedative and honey, believed to induce sleep, should result in a peaceful, uninterrupted slumber. The beverage is best sipped when tucked up in bed, propped up with a good book so that you can drift off to sleep.

- 1 Chamomile tea bag
- 2 tsp. Honey

Make a cup of chamomile tea with hot water and allow to cool until warm only. Stir in the honey and sip intermittently.

Herbal Cold & Throat Syrup – to relieve all those irritating symptoms that accompany a cold, try this syrup. Sage is said to alleviate aches, pains and fever.

- ½ tsp. Chopped fresh or rubbed dried sage
- 3 tbsp. Honey
- 2 tbsp. Cider vinegar

Tie the sage in a gauze bag and steep in a cup half filled with boiling water for 10 minutes. Remove the sage and allow to cool. Put the honey in a screw top jar or bottle. Pour in the cider vinegar, then pour in the cooled sage water. Shake until well mixed. Take 2 teaspoons every hour until the symptoms ease.

Classified Ads

Any member may place a classified ad for \$7.50 per newsletter issue. Please send the ad in writing to the editor and the payment to the treasurer.

For sale: 4 misc. size strange tanks with covers, HD 1" gear pump on channel - \$250, 2 HD Dayton motors 120/220, barrel truck, 40 gal. double boiler - \$225, assorted strainer screens, mix paddle with pulley/motor attachment, 110V - 1500 watt immersion heaters with spare elements, parts & thermostats, Terry Wilson - Washington - 314-390-2315 - leave message on recorder



MID-CON
MID-CONTINENT AGRIMARKETING, INC.
 1465 NORTH WINCHESTER • OLATHE, KANSAS 66061-5881
 (913) 768-8967 FAX: (913) 768-8968



Mid-Con carries a complete line of beekeeping supplies. We carry containers, woodenware, wax, medications, gift items, candle making supplies....ordering is just as easy as a phone call...use our toll free 800 # to place your order. We also attend the Missouri State Beekeepers Meetings and will be happy to deliver your order there!

1-800-547-1392

Media Happenings

If any members are interviewed for newspaper articles, TV spots or radio segments. Send them to the editor so we can share.

In one of the recent copies of *Bee Culture* or *American Bee Journal* (sorry, I forgot which one) there was a copy of a press release that you had permission to reproduce about yellowjacks and picnicking and send to a local newspaper. Did you take advantage of that

opportunity? Femme Osage Apiary (Pam Brown) did and it was published in the *Tri County Explorer*.

On Tuesday August 11th, Heidi Glaus of Channel 5's "Show Me St. Louis" program came to Ted Jansen's to find out how honey gets from the hive into a bottle. The segment, which lasted about 3 minutes, aired that same afternoon. They filmed the bees in the hive on the frames, the uncapping process, the extraction and flow of honey into the strainer and into the tank. Lastly they showed a jar of honey. It was very effective because Ted emphasized the gentleness of the bees – no one wore bee suits or veils – no one was stung – and they made a convert of Heidi, who said she didn't like honey before the program. After tasting some directly from the frame, she said it was "pretty good".

On August 14th, Ian Brown was interviewed at the State Fair for one of the radio stations that was on the fair grounds. They asked general questions about beekeeping.

September is Honey Month

Send press releases to your local newspapers, radio and TV stations advertising Honey Month. Even make up posters and give them to your distribution accounts for display near your honey. If you need assistance or ideas, contact the National Honey Board.



Gateway Food Products Since 1962

Gateway Food Products introduces a liquid sweetener for all beekeepers.

No more mess mixing hot water with sugar to feed bees.

Now available, 5 gallon plastic pail DuSweet #5-Hi Fructose Corn Syrup.

Advantages

- * 5 gallon re-useable food grade plastic pails. Excellent for re-packing honey.
- * Product in liquid form ready to use.
- * No minimum order required.
- * 1 year shelf life.
- * Centrally located. 5 minutes from downtown St. Louis
- * Additional savings by diluting with water 3 - 1.
- * Product also available in drums and totes
- * Sweeter than sugar and water.
- * Easy application.
- * Immediate availability

For more information, call Teresa Elder (Account Executive) at Gateway Food Products, Co. (314)231-8857 or visit our plant at 1728 North Main, Dupu Illinois 62239.

For mite problems, try our 50# Cake & Icing Shortening.

**1998 Missouri State Fair
Apiculture Exhibit Winners**

| Individual Classes | | **Grand Champion - Rose Terrill, Lone Jack, MO** | | | |
|---------------------------|---|---|---------------------------------|---------------------------------|---------------------------------|
| <u>Class</u> | <u>Exhibit</u> | <u>First Place</u> | <u>Second Place</u> | <u>Third Place</u> | <u>Fourth Place</u> |
| 1 | Display of Apiary Product | No Entries | n/a | n/a | n/a |
| 2 | Store Display | Rose Terrill Lone Jack, MO | Louise O'Fallon Columbia, MO | Art/Vera Gelder Columbia, MO | n/a |
| 3 | Display of light extracted honey, 25-50 pounds. | Rose Terrill Lone Jack, MO | Art/Vera Gelder Columbia, MO | Sharon Gibbons Ballwin, MO | Louise O'Fallon Columbia, MO |
| 4 | Cut comb honey | Rose Terrill Lone Jack, MO | Sharon Gibbons Ballwin, MO | Norm Grosche Green Park, MO | Louise O'Fallon Columbia, MO |
| 5 | Round or square section comb honey | Bob McCarty Sedalia, MO | n/a | n/a | n/a |
| 6 | Light bulk comb honey | Rose Terrill Lone Jack, MO | Louise O'Fallon Columbia, MO | Bob McCarty Sedalia, MO | n/a |
| 7 | Dark bulk comb honey | n/a | n/a | n/a | n/a |
| 8 | Light extracted honey | Norm Grosche Green Park, MO | Rose Terrill Lone Jack, MO | Robert Sears St. Louis, MO | Sharon Gibbons Ballwin, MO |
| 9 | Dark extracted honey | Louise O'Fallon Columbia, MO | Ted Jansen Chesterfield, MO | Sharon Gibbons Ballwin, MO | Ken Corbin Chesterfield, MO |
| 10 | Sealed honey, brood frame | n/a | n/a | n/a | n/a |
| <u>Class</u> | <u>Exhibit</u> | <u>First Place</u> | <u>Second Place</u> | <u>Third Place</u> | <u>Fourth Place</u> |

| | | | | | |
|----|---|--------------------------------|-----------------------------------|---------------------------------|-----|
| 11 | Sealed honey, shallow-depth frame | Rose Terrill Lone Jack, MO | Art / Vera Gelder Columbia, MO | Bob McCarty Sedalia, MO | n/a |
| 12 | Candied honey | n/a | n/a | n/a | n/a |
| 13 | Yellow beeswax | Rose Terrill Lone Jack, MO | Sharon Gibbons Ballwin, MO | Louise O'Fallon Columbia, MO | n/a |
| 14 | Queen and her bees | Ted Jansen Chesterfield, MO | n/a | n/a | n/a |
| 15 | Art designs | Casper Blecha St. Louis, MO | Rose Terrill Lone Jack, MO | Louise O'Fallon Columbia, MO | n/a |
| 16 | Beeswax candles | Casper Blecha St. Louis, MO | Rose Terrill Lone Jack, MO | n/a | n/a |

Group Classes

Grand Champion - Midwestern Beekeepers Association

| <u>Class</u> | <u>Exhibit</u> | <u>First Place</u> | <u>Second Place</u> | <u>Third Place</u> | <u>Fourth Place</u> |
|--------------|---|---|--|--|---|
| 17 | Store Display | Boone Regional Beekeepers Louise O'Fallon | Midwestern Beekeepers Bill Terrill | Eastern MO Beekeepers Micky Lee | n/a |
| 18 | Display of light extracted honey 25-50 pounds | Midwestern Beekeepers Glenn Davis | Midwestern Beekeepers Bill Terrill | Eastern MO Beekeepers Sharon Gibbons | Boone Regional Beekeepers Louise O'Fallon |
| 19 | Cut comb honey | Midwestern Beekeepers Bill Terrill | Midwestern Beekeepers Glenn Davis | Eastern MO Beekeepers Sharon Gibbons | Boone Regional Beekeepers Art Gelder |
| 20 | Round or square section comb honey | Midwestern Beekeepers Richard Scott | Eastern MO Beekeepers Sharon Gibbons | n/a | n/a |
| 21 | Light bulk comb honey | Midwestern Beekeepers Bill Terrill | Midwestern Beekeepers Glenn Davis | n/a | n/a |
| 22 | Light extracted honey | Midwestern Beekeepers Glenn Davis | Eastern MO Beekeepers Sharon Gibbons | Midwestern Beekeepers Bill Terrill | Midwestern Beekeepers Richard Scott |
| 23 | Dark extracted honey | Midwestern Beekeepers Richard Scott | Eastern MO Beekeepers Casper Blecha | Eastern MO Beekeepers Sharon Gibbons | Eastern MO Beekeepers Ted Jansen |
| 24 | Yellow beeswax | Eastern MO Beekeepers Sharon Gibbons | Eastern MO Beekeepers Ted Jansen | Midwestern Beekeepers Bill Terrill | Boone Regional Beekeepers Louis O'Fallon |

YOUR ONE-STOP SHOPPING CENTER FOR BEE SUPPLIES

Check with us first for COMPETITIVE pricing on:

- ✓ *A complete Selection of Comb Honey Supplies for Cut comb, Square Sections, Round Sections and Cassette Half Comb Honey Production.*
- ✓ *Fresh Stocks of Tetra-Bee Mix, Terramycin®, and Fumidil-B.*
- ✓ *Apistan for Varroa mites and Menthol for tracheal mites.*
- ✓ *Fresh 100% Beeswax Foundation in All Sizes and Styles, including PLASTICELL.*
- ✓ *Gloves, Veils, Bee Suits, Smokers, Frame Grips, etc.*
- ✓ *Woodenware, Paint and Wood Preservatives.*
- ✓ *Honey House Metalware Needs — Extractors, Tanks, Pumps, Melters, Knives, etc.*
- ✓ *A Complete Selection of Honey Containers.*

Everything for the Beekeeper

Dadant & Sons, Inc.

DADANT & SONS, INC.

51 South 2nd Street

HAMILTON, IL 62341-1399

Phone 217-847-3324

Fax 217-847-3660



Helping beekeepers since 1863

REQUEST FOR MSBA QUEEN PARTICIPATION IN LOCAL MISSOURI HONEY PROMOTIONAL EVENTS

Name of Association: _____

Title of Event: _____

Date of Event: _____

Time of Event: _____

Description of Event: _____

Any special apparel the queen might be required to wear? If so what? _____

Name, address & phone number of person responsible for details during Queen's visit: lodging, meals, safekeeping, etc. _____

Name, address & phone number of host family with who Queen will stay overnight: _____

Expense items projected for the visit: _____

Mail to:

Vera Gelder
Auxiliary President
MSBA
6800 N. Kircher Road
Columbia, MO 65202

1998 MISSOURI STATE BEEKEEPERS ASSOCIATION MEMBERSHIP APPLICATION

Name: _____

Address: _____

City: _____ State: _____ Zip+4: _____

Phone: () _____

E-Mail: _____

Membership for Missouri State Beekeepers Assn. \$10.00

Special Queen Fund Donation (Optional) _____

Auxiliary _____ \$10.00

Subscriptions:

| | | |
|-----------------------------|-------|---------|
| <i>American Bee Journal</i> | _____ | \$13.46 |
| <i>Bee Culture</i> | _____ | \$12.75 |
| <i>The Speedy Bee</i> | _____ | \$13.25 |

If you belong to a local beekeeping organization, please pay your state dues Through the local treasurer. If not, make checks payable to: Missouri State Beekeepers Assn. and mail to:

Ron Vivian, Treasurer
Missouri State Beekeepers Assn.
P.O. Box 448
Oak Grove, MO 64075

HONEY



APIS
 BEEBRUSH
 BOTTOMBOARD
 CARNIOLAN
 CAUCASIAN
 COVERALLS
 DIVIDES
 EXCLUDER

FOULBROAD
 FOUNDATION
 FRAME
 GLOVES
 HIVEBODY
 HONEYBEE
 INNERCOVER
 ITALIAN

NUC
 OUTERCOVER
 SMOKER
 SPLITS
 SUPER
 TRACHEAL
 VARROA
 VEIL

Volunteer Sign-up Sheet

I volunteer to run for the following office for 1999:

V. P. (1998)

Secretary

Treasurer

Auditor

Director

Member at Large

I nominate the following individuals to run for the following offices for 1999:

V. P. - 2 years

Secretary - 1 year

Treasurer - 1 year

Director - serve until 12/31/02

Member at Large - 1 year

I volunteer to serve on the following committees/activities:

Honey queen coordinator - 1999

Legal Advisor - 1999

Newsletter Editor - 1999

Cookbook Committee

Auditor - 1999

Represent Missouri at National Honey Federation

Convention - January 1999 (sorry, but at own expense) and write a report for newsletter

Represent Missouri at The Honey Producers Association Convention - January 1999 (sorry, but at own expense) and write a report for newsletter

Apitherapy contact, the individual that will stay abreast of Apitherapy that the state members can direct inquiries

NEW from Mann Lake..

Rite-Cell™

Plastic Foundation

Here's the buzz on the latest way to make your bees more productive and your operation run more dependably. Our new Rite-Cell plastic foundation provides a deeper cell and higher definition that encourages bees to work it faster. And that spells increased honey yields. Call us toll free for the full story and complete details. Ask about New Pre-Assembled Frames equipped with Rite-Cell Foundations!

**Mann Lake Ltd. - 501 S. 1st St.
Hackensack, MN 56452-2001**

Fax 218-675-6156

E-Mail beekespr@mannlakeltd.com

1-800-233-6663

Advertising

_____ Contact and solicit advertising for Newsletter – starting now

_____ Contact and solicit literature, door prizes and vendors for meetings - 1999

Governor's Conference – Tan-Tar-A – Dec. 13, 1998

_____ Purchase/prepare salad or slaw

_____ Set-up table decoration

_____ Last minute preparation at Tan-Tar-A (mix or put into bowls, wear apron and gloves))

_____ Serve (wear NHB apron)

Program Committee – 1999 (2 per year, can even be scheduled several years in advance)

_____ Arrange logistics & meals

_____ Arrange program

_____ Plan & oversee the registration

Governor's Ag Dinner - Jefferson City – late winter, 1999

_____ Purchase/prepare salad or slaw

_____ Set up table decoration

_____ Last minute preparation on site (wear apron and gloves)

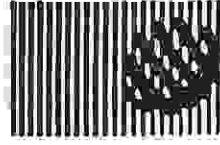
_____ Serve (wear NHB apron)

Mail to: Don Moore

Secretary MSBA

15 Kathryn Dr.

St. James, MO 63559



Rt. 8, Box 8257
Hayward, WI 54843

DID YOU BEEHIVE BOTANICALS[®] KNOW?

Beehive Botanicals, Inc./Propolis U.S.A. has been buying Propolis and Hivescrapings for over 20 years.

Call 1-800-283-4274
for current prices, shipping
and handling instructions.

We have a full line of
Health & Beauty aids as
well as Food Supplements
made with Propolis.
Call for our wholesale
order form.

STATE FAIR QUESTIONNAIRE

We are requesting your input regarding the good/bad about the State Fair. Please complete this form and mail to Ian Brown, 1407 Sneak Road, Foristell, MO 63348-2102, it needs to be received by September 10th.

I think the operation and everything about the Fair is just fine and no changes should be made.

I think we could improve the Fair and the way it is being operated. How?

The Fair this year, what did you like?

The Fair this year, what didn't you like?

Should we have a dress code? If so what?

I think the Fair's main purpose should be:

Money raiser

Educational

Would you volunteer to serve on one of the following committees or job?

Over-all coordinator (chair-person)

Be the on-site manager

Complete arrangements/scheduling for individuals staying overnight

Solicit honey, bids and serve on selection committee

Set-up

Disassemble

Schedule all manning

Plan and instruct setting up of entries for exhibition

(person must not be entering the competition)

Plan and arrange for informational display.

Plan and arrange for sale display

Serve on committee about what to sell besides honey,

such as ice cream, lemonade, candle making kits, etc.

Others you can think of

Your name and phone number or e-mail address: _____



NEWS RELEASE

NATIONAL HONEY BOARD

390 Lashley Street Longmont, CO

80501-6045 303-776-2337

800-553-7162

FAX 303-776-1177

www.nhb.org

www.honey.com

For more information, contact
Gretchen Lichtenwalner,
(303)776-2337

HONEY HISTORY FACTS

LITERATURE: 21ST CENTURY B.C.

Honey is alluded to in the Sumerian and Babylonian cuneiform writings, the Hittite code, the sacred writings of India, the Vedas and in the ancient writings of Egypt.

BIBLICAL

Palestine is often referred to as "the land of milk and honey." (Exodus 3:8)

EGYPT: 30TH CENTURY B.C.

Honey was used in most households as a sweetening agent. The people of this time valued honey highly; thus, it was commonly used as a tribute or payment. Honey was also used to feed sacred animals.

SUMERIA, ASSYRIA AND BABYLONIA: 21ST CENTURY B.C.

Honey was poured over thresholds and stones bearing commemorative offerings. Honey and wine were also poured over bolts that were to be used in sacred buildings.

GREECE: 7TH CENTURY B.C.

An ancient custom was the offering of honey to the gods and to spirits of the dead. Mead, an alcohol drink made with honey, was considered the drink of the gods.

GERMANY: 11TH CENTURY A.D.

German beer was sweetened with honey. German peasants were required to give their feudal lords a payment of honey and beeswax.

AMERICAS: 16TH CENTURY A.D.

Conquering Spaniards found that the natives of Mexico and Central America had already developed beekeeping. A distinct family of honey bees were native to the Americas.

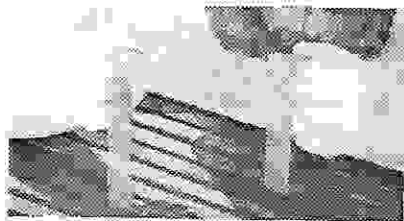
AMERICAN COLONIES: 17TH CENTURY A.D.

European settlers introduced European honey bees to New England in about 1638. North American natives called these honey bees the "white man's flies." Honey was used to prepare food and beverages, to make cement, to preserve fruits, to concoct furniture paste-polish and varnish and for medicinal purposes.



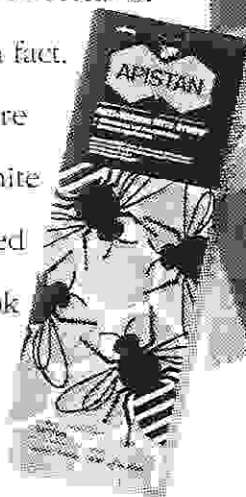
###

As a beekeeper, you want honey pure enough for your own family to eat. But you also have to keep bees free



With a new self-hanging design and EPA registration, APISTAN is easier than ever to use.

from Varroa mites. Economically protect both bees and honey with APISTAN® Strips. APISTAN has proven 99.8% effectiveness against Varroa mites, yet it won't harm bees. APISTAN doesn't contaminate honey, so you'll never face the food safety concerns of other miticides. In fact, APISTAN Strips are the only Varroa mite treatment approved in all 50 states. Look into it today, just to be safe.



For more details or to view our informative video tape, call 1-800-527-0512.

©1993 Zoexco. APISTAN is sold by Zoexco Corporation, a Sandoz Company, 12200 Denton Drive, Dallas, Texas 75234. APISTAN is a trademark of Sandoz Ltd.

Always read the label before using the product.

ONLY ONE MITICIDE CAN MAKE A DISH THIS PURE AND WHOLESOME.



TO MEMBERS:

We are interested in each and every one of our members. Although we cannot give each one the individual attention we would like, we try to make your membership meaningful and trust that it adds zest, pleasure, and profit to your beekeeping endeavor. You may not even have bees, but your interest in bees and what the bees contribute to our nation's economy will lead to prosperity for all.

If you know of any beekeeper who does not belong to Missouri State Beekeepers Association, please pass this newsletter along to them and encourage them to join.

Dues are \$10.00 per year. Make checks payable to Missouri State Beekeepers Association. If you belong to a local association, you may pay your dues through your local treasurer.

Enclosed is \$_____ for _____ years of membership

NAME: _____

ADDRESS: _____

CITY: _____ STATE: _____ ZIP: _____

PHONE: _____

Mail to: Ron Vivian, P.O. Box 448, Oak Grove, MO 64075

MISSOURI STATE BEEKEEPERS ASSOCIATION
314 QUINMOOR
BALLWIN, MO 63011

NON-PROFIT ORGANIZATION
U.S. POSTAGE PAID
PERMIT NO. 1152

ADDRESS CORRECTION REQUESTED

